



markem·imaje

a DOVER company



Fiber laser coder

SmartLase[®] F250

Reliable. Compact. Intelligent.

Printer Intelligence | Packaging Intelligence | Brand Intelligence

Power in a small package

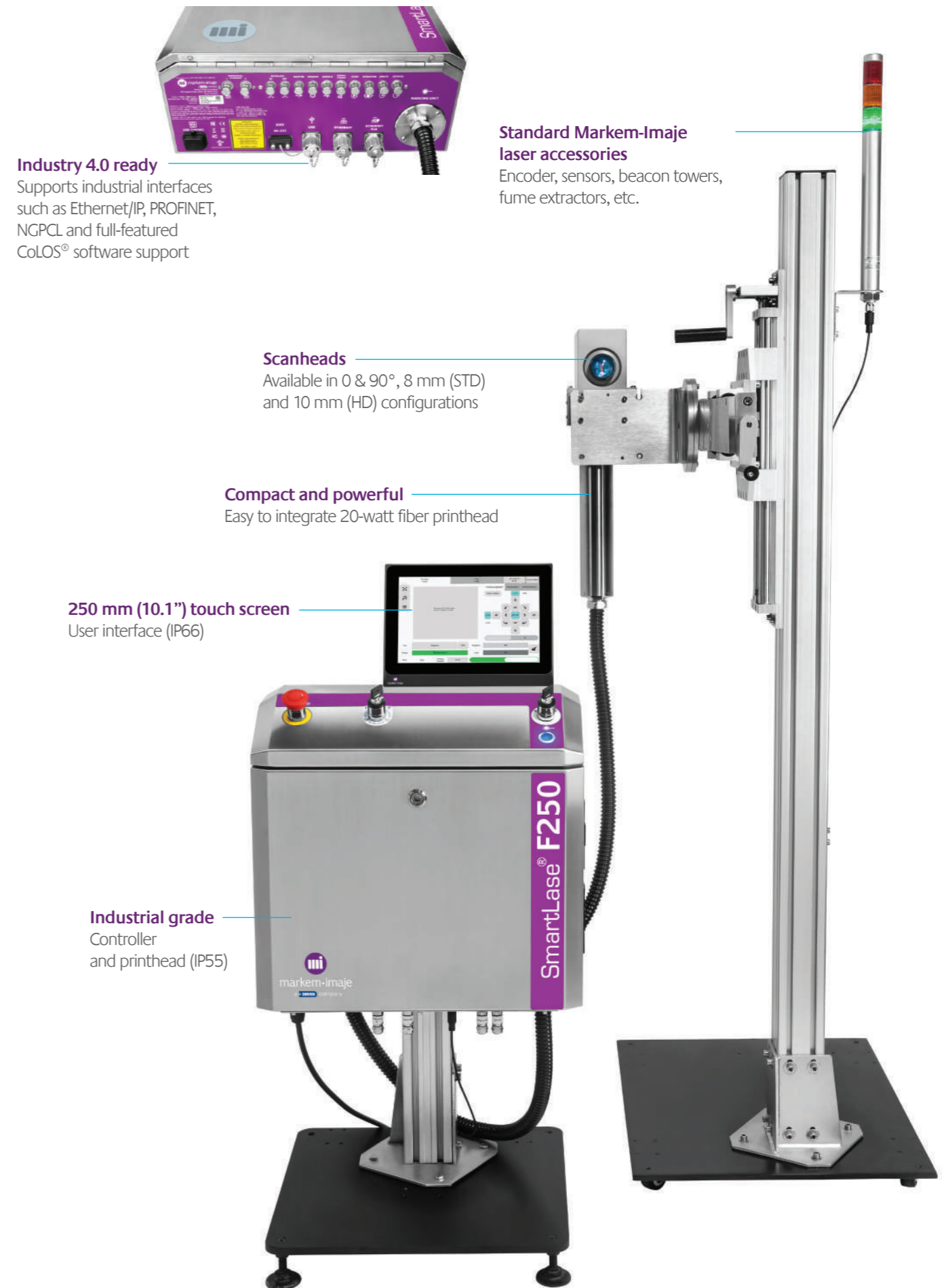
The intelligent choice for your smart factory

The SmartLase® F250 fiber laser coder delivers superb code quality in high-speed applications, even with increasing code complexity of 1D and 2D codes, all in an easy-to-integrate and easy-to-operate compact unit.

- High-quality, chemical-free and permanent coding on high-density substrates
- Lower operating expenses (OPEX) with fewer line stoppages, higher efficiency and no consumables
- Easy to integrate and operate with intuitive user interface for improved operator's efficiency and reduced risk of human errors
- Industry 4.0 ready



Easy to use and integrate



Industry 4.0 ready
Supports industrial interfaces such as Ethernet/IP, PROFINET, NGPCL and full-featured CoLOS® software support

Standard Markem-Imaje laser accessories
Encoder, sensors, beacon towers, fume extractors, etc.

Scanheads
Available in 0 & 90°, 8 mm (STD) and 10 mm (HD) configurations

Compact and powerful
Easy to integrate 20-watt fiber printhead

250 mm (10.1") touch screen
User interface (IP66)

Industrial grade
Controller and printhead (IP55)

Applications

Markem-Imaje is committed to helping you achieve the best quality codes for your specific application. We provide customized sample print test support that considers your code, content, line speed and substrate to ensure you have the 'just right' laser wavelength, power and lens solution.



Food and beverage: Bare metals, metalized foil packaging, plastics, aluminum and anodized aluminum containers or caps

Pharma: Aseptic packaging, blister packs, vial enclosures

Electrical: Metal and plastic parts (ABS, HDPE), wire jackets

Automotive: Metal (steel, copper, titanium, aluminum) and plastic parts (POM, polycarbonate, polystyrene)

The SmartLase® F250

Crisp, superb quality, permanent codes

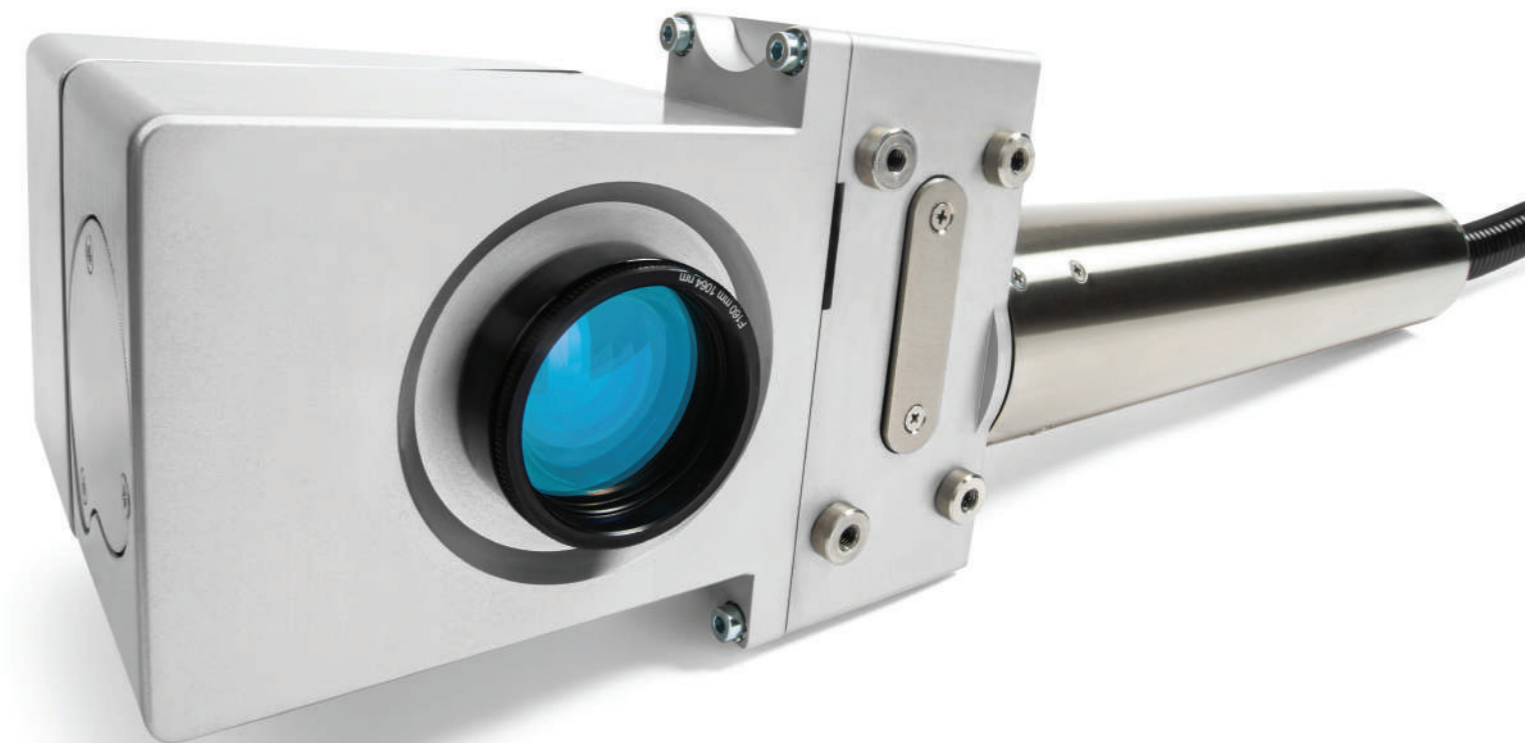
- Clean, readable and traceable even at high line speeds and product throughput, minimizing rework and recall costs
- Permanent, indelible marking prevents counterfeiting, protecting brand integrity
- High-performance digital galvanometers are driven by a unique algorithm

Lower OpEx, higher efficiency and chemical-free

- Lower operating expenses by eliminating the cost of consumables and external cooling
- Virtually maintenance free to increase Overall Equipment Efficiency (OEE) and minimize production losses with fewer line stoppages
- Clean and compliant production supports your sustainability goals by eliminating chemical components

Industry 4.0 ready, rugged and safe

- Industry 4.0 optimized with industrial interfaces such as Ethernet/IP, PROFINET, NGPCL and full-featured support for CoLOS® software enabling seamless integration with complex plant automation and manufacturing execution systems (MES)
- Reliable operation in harsh, dusty and humid manufacturing environments with an IP55 controller unit and printhead
- Meets highest safety standards for E-stop and interlock circuits as per ISO 13849-1 / PLc

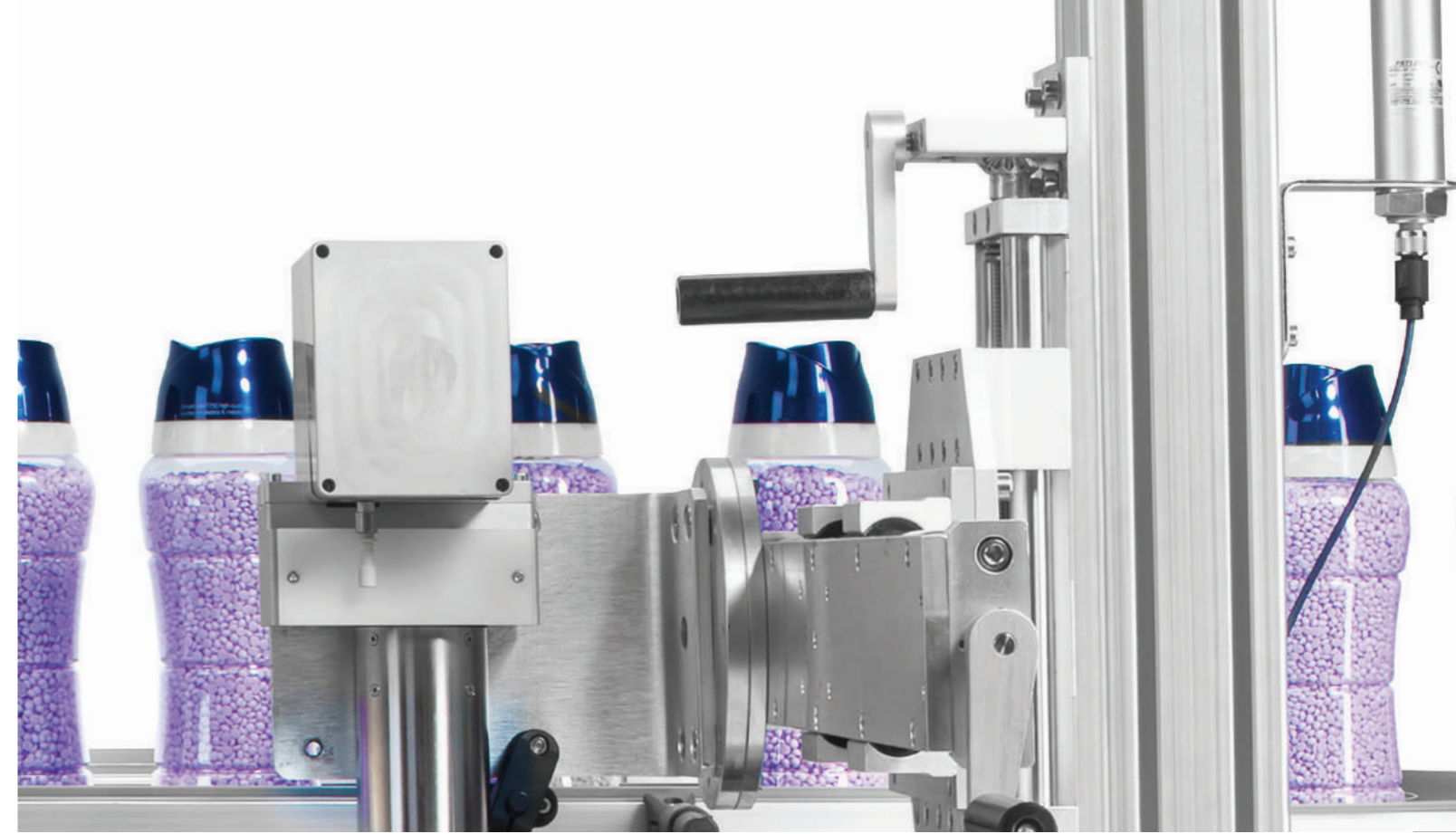


End-to-end supply chain solutions

Markem-Imaje provides producers and machine manufacturers worldwide with a one-stop-shop of innovative smart product identification, packaging intelligence and connected product solutions to unlock the power of intelligence in codes.

By seamlessly integrating the most comprehensive range of proprietary coding technologies with software, services and certified consumables, we empower our customers with the right information across the supply chain—keeping products and consumers safe and connected - this is intelligence, beyond the mark.

Our Connected Product solutions yield proven software applications to support our customers from simple code and message design, through code and packaging validation, to traceability, authentication and digital, connected product experiences, created for consumer engagement.



Code & data management



Provision of verified data carriers and seamless data management from production and regulatory sources to consumers' hand

Unique identification & traceability



Serialization, aggregation and end-to-end traceability for on- and off-premises item transfer visibility and recall handling

Authenticity, counterfeit protection & tailored inputs



Enable retailers and consumers to authenticate and receive/ share latest data and messages

Consumer engagement and insight



Empower the brand to directly engage with the consumer through a dynamic experience and data transparency while gaining behavioral insight

SECURE CLOUD



Markem-Imaje reliability and service support

Markem-Imaje ensures peace of mind with our comprehensive service portfolio. Our global team of technical experts is here to help you increase production output, reduce downtime and optimize printer performance—from startup and training through upkeep and repairs.

We are committed to providing the best customer service and support possible, using the method that's most convenient for you.



Online and remote expert resources

Quickly recover from unexpected technical and mechanical issues with live helpdesk support including remote video capabilities

Resolve technical issues yourself anytime with the help of our intelligent self-support solution.



On-demand consumables, repairs and spares

Plan ahead with consumable and maintenance agreements tailored to meet your business needs

Order and track spare parts and consumables as you need them with our online portal



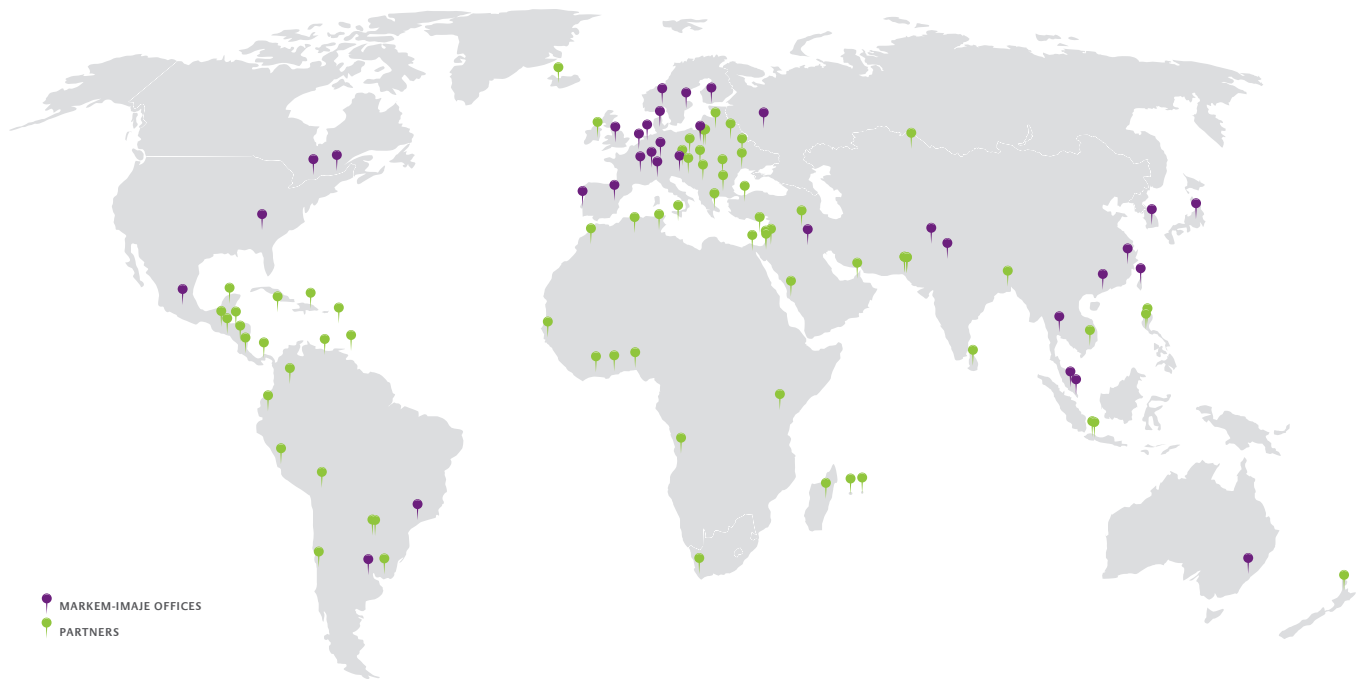
Personalized, scalable rental program

Design a turnkey coding solution that perfectly fits your unique needs with Confidence 360 — our flexible rental program, giving you cost predictability

About Markem-Imaje

Markem-Imaje, a wholly owned subsidiary of Dover Corporation, connects products and protects brands through intelligent identification, traceability and consumer engagement solutions. We offer the industry's most comprehensive range of marking and coding systems seamlessly integrated with trusted software, services and consumables. Over 50,000 customers worldwide partner with us to help them unlock the power of information in codes.

With decades of proven expertise provided through the most extensive global network, we empower our customers to optimize supply chain efficiencies, achieve sustainability and compliance objectives, keep products safe and engage their consumers. This is intelligence, beyond the mark.



markem•imaje

a **DOVER** company

9, rue Gaspard Monge - B.P. 110
26501 Bourg-lès-Valence Cedex France

+33 (0) 4 75 75 55 00

markem-imaje.com